

Cómo administrar y gestionar su Centro de Datos eficientemente

Erick Carmona
TSE

Carlos Valenzuela
TAM

PANDUIT[®]



Presentación

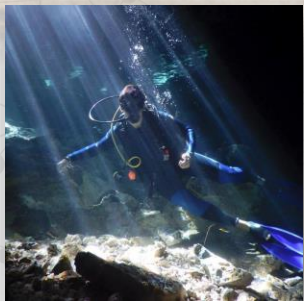


Carlos Valenzuela
Territory Account Manager

48 / BAJA CALIFORNIA

Ing. en Tecnología Electrónica
Universidad de California

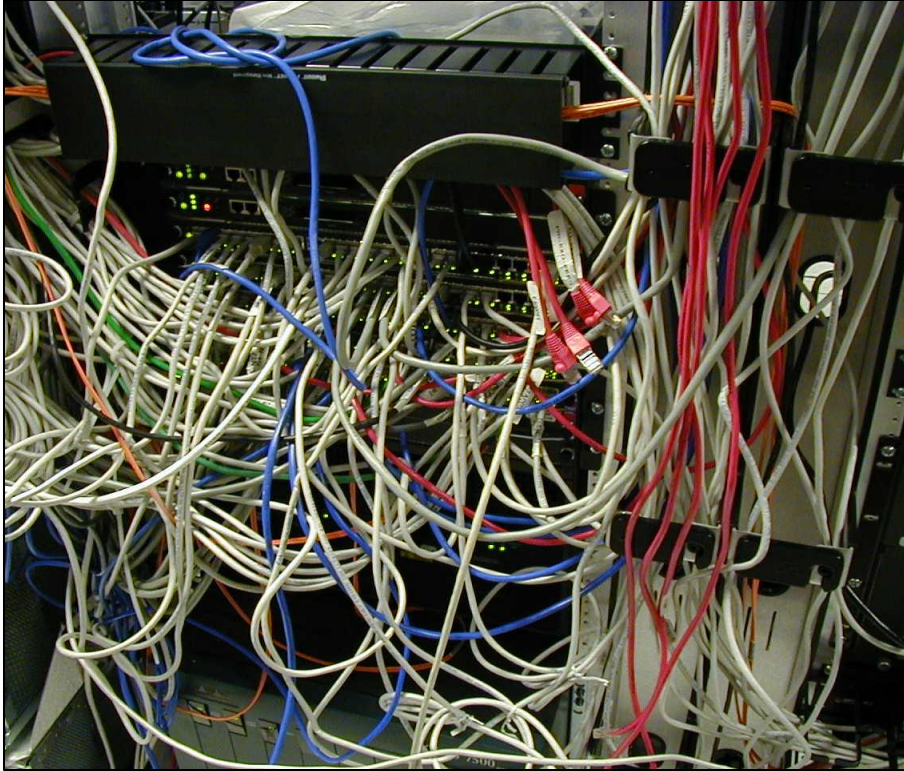
Presentación



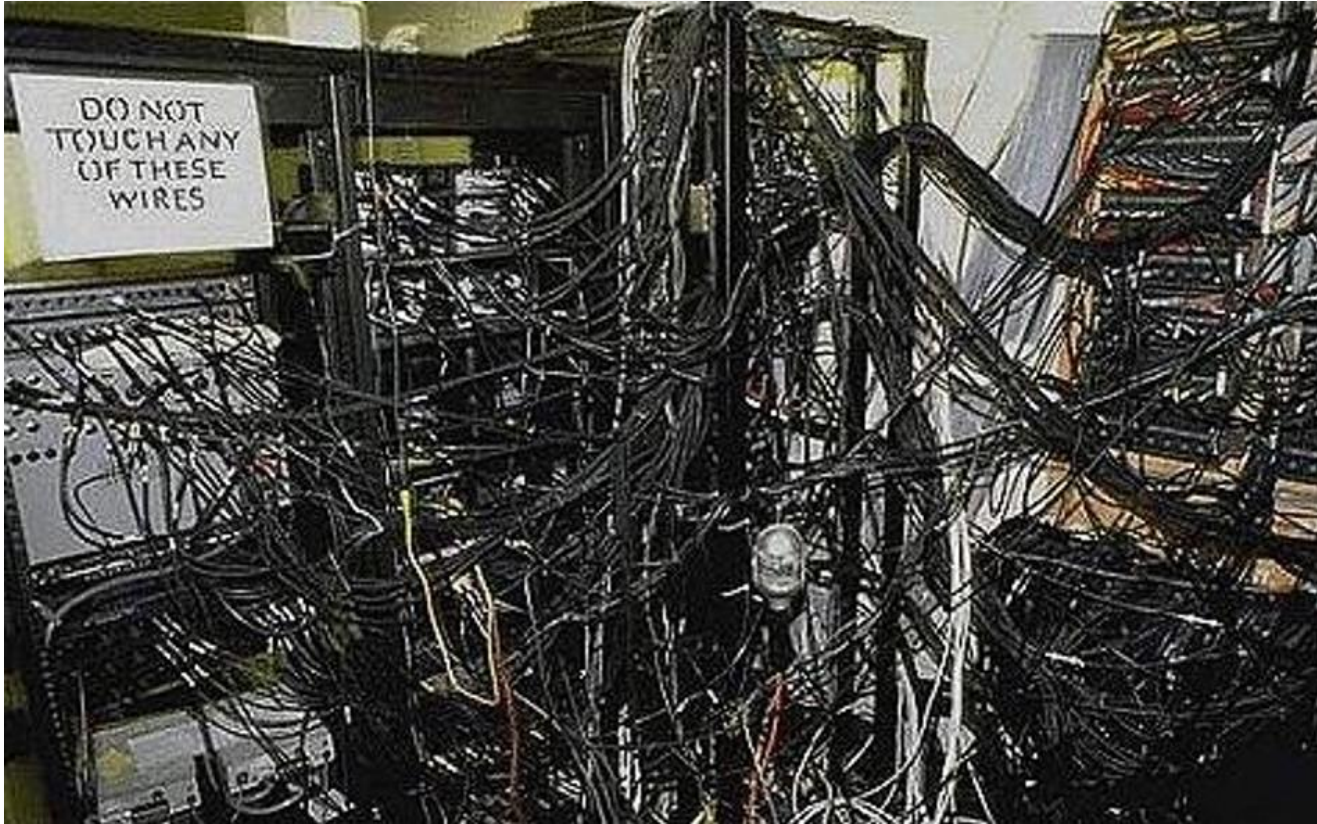
Erick Carmona
 Technical Systems Engineer
 30 | Estado de México

Ing. en Control y Automatización
 Esp. Control Avanzado
 Instituto Politécnico Nacional

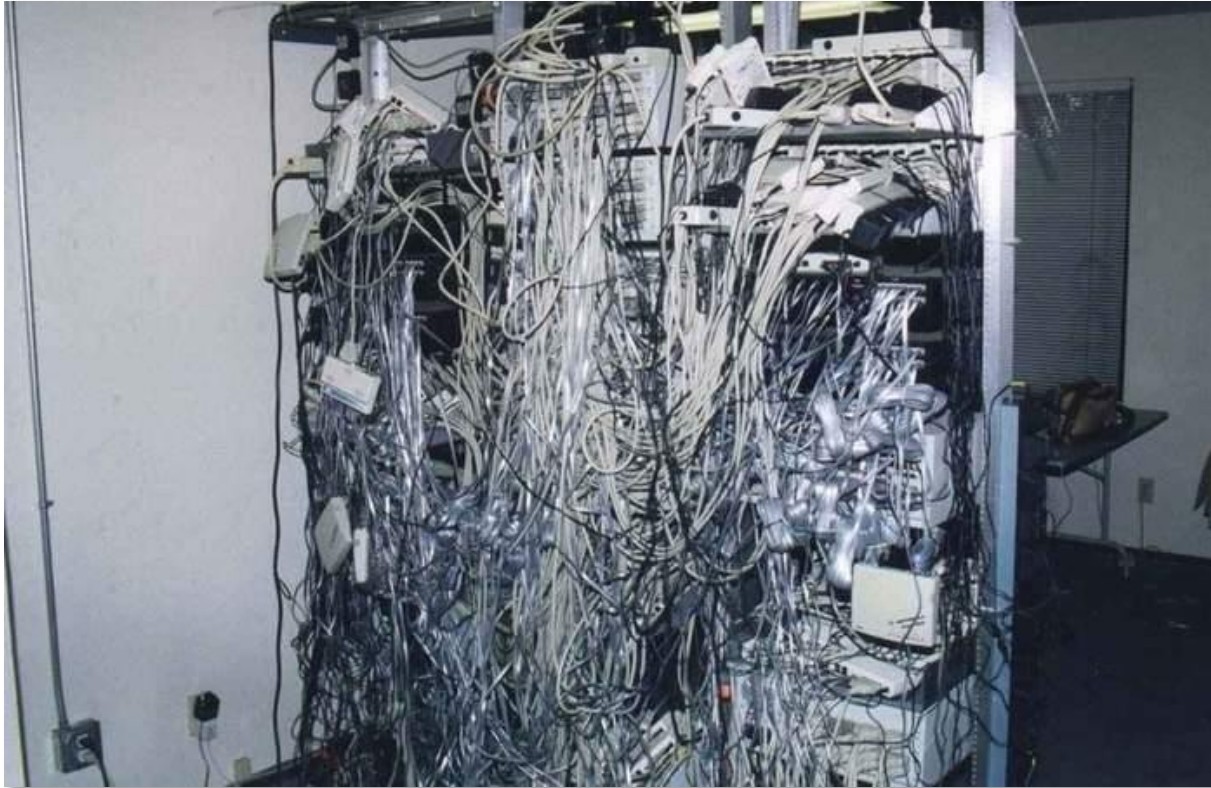
¿Por qué se debe etiquetar?



Cableado: no tocar ese cable



¿Qué quiere decir con que puedo encontrar el cable?

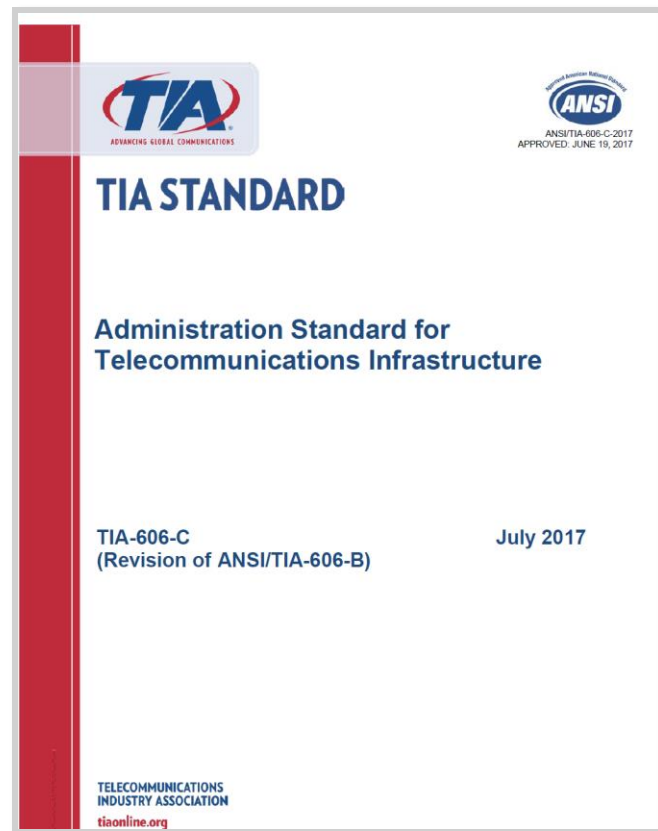


Administración de cables para mejor flujo de aire

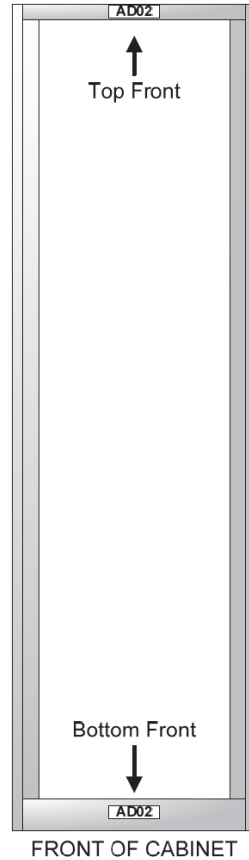
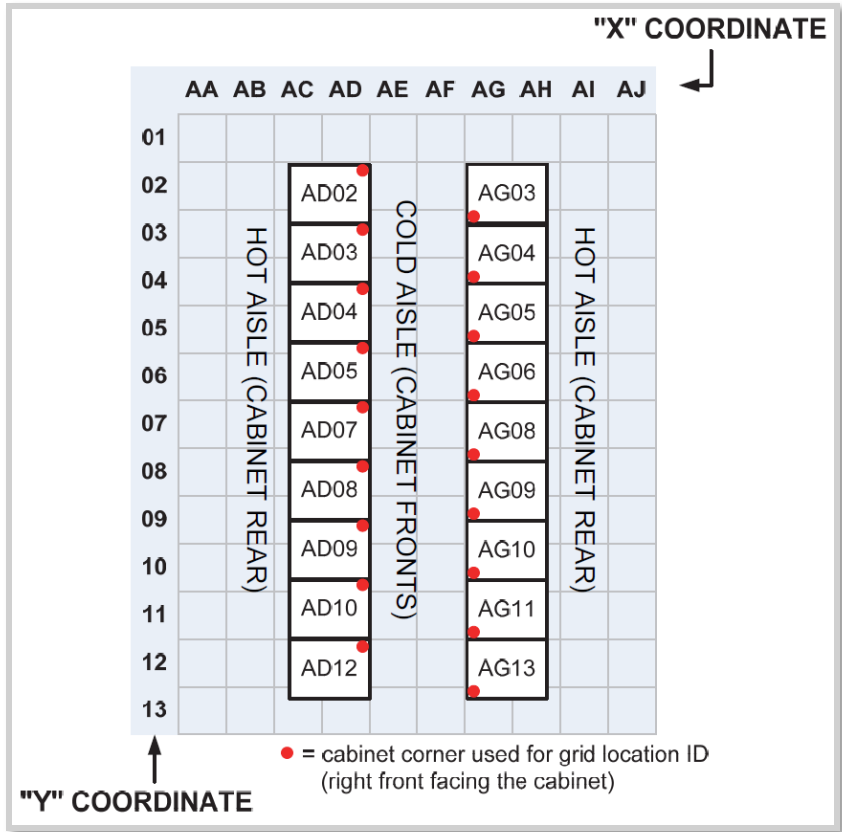


Administración ANSI/TIA 606-C

El método de etiquetar, identificar, documentar y uso requerido para instalación, movimientos, adiciones y cambios para la infraestructura de telecomunicaciones

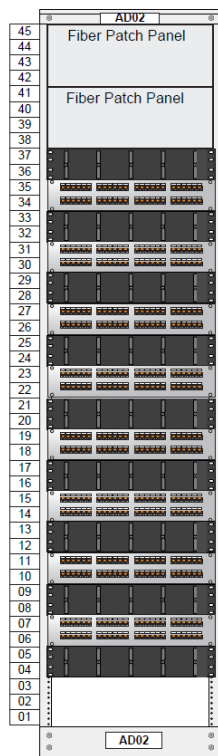


Grid en el DC



Patch Panel

Rack unit position from bottom of usable space in cabinet or rack



Patch Panel AD02-45

Patch Panel AD02-41

Patch Panel AD02-35

Patch Panel AD02-31

Patch Panel AD02-27

Patch Panel AD02-23

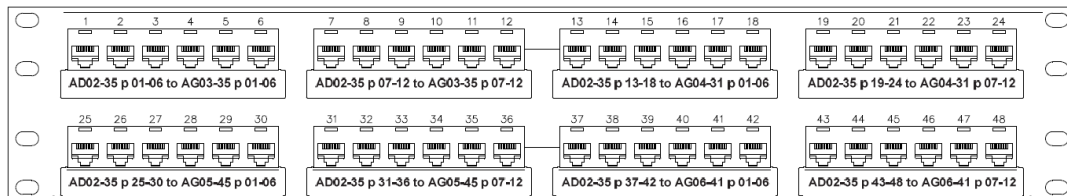
Patch Panel AD02-19

Patch Panel AD02-15

Patch Panel AD02-11

Patch Panel AD02-07

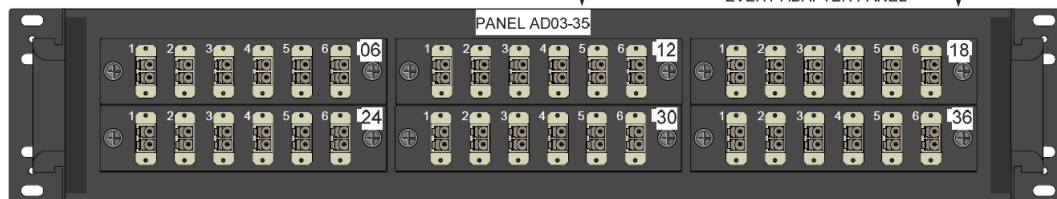
Cabinet or rack ID
Position of top of patch panel in rack units from bottom



FIBER PATCH PANEL LABELING

PATCH PANEL NAME

LAST PORT NUMBER ON EVERY ADAPTER PANEL



NEAR-END LOCATION, CABLE TYPE, NEAR-END PORTS & FAR-END PORTS

HDA03 Multimode Fiber Patch Panel AD03-35

Ports 01-12 to AG10-41 Ports 01-12
Ports 13-24 to AG11-41 Ports 01-12
Ports 25-36 to AG13-41 Ports 01-12

FIBER PATCH PANEL COVER LABELING

SmartZone DCIM Goals and Modules

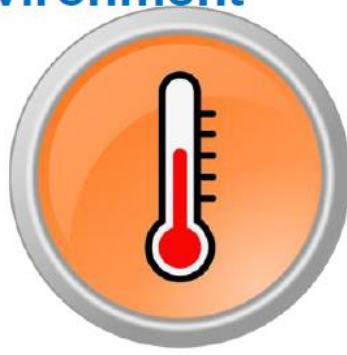
Goals:



Power



Environment

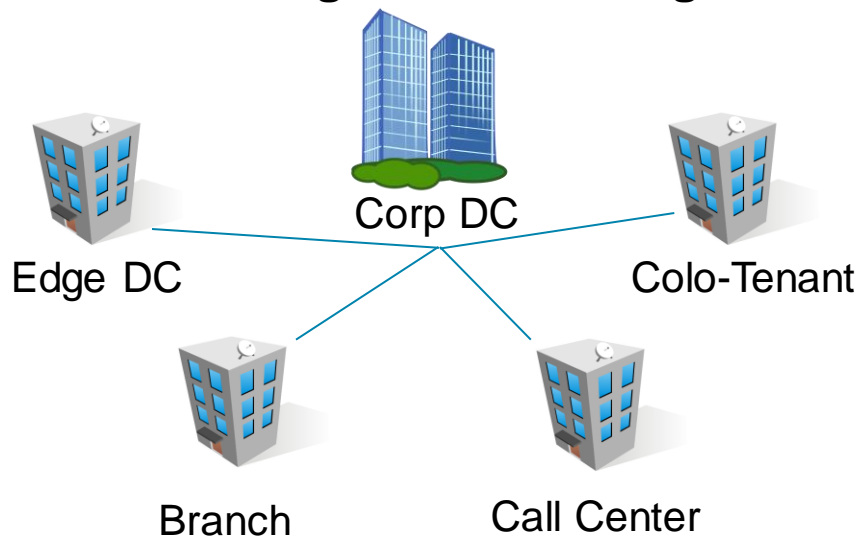


Asset



Challenges

Remote Management Challenges



Managing Security Vulnerability

- Malicious Disconnect
- Accidental Disconnect
- Line Tapping / Data Bridge
- Port Tapping

Managing Financial Impact of Downtime

- Lost Productivity
- Additional Labor Cost
- Business Loss

SmartZone Connectivity (PViQ™) Solutions

Helps IT stakeholders address risk by providing real-time monitoring and visibility of physical layer connectivity for network availability, reliability, and security.

Connectivity Security Challenges

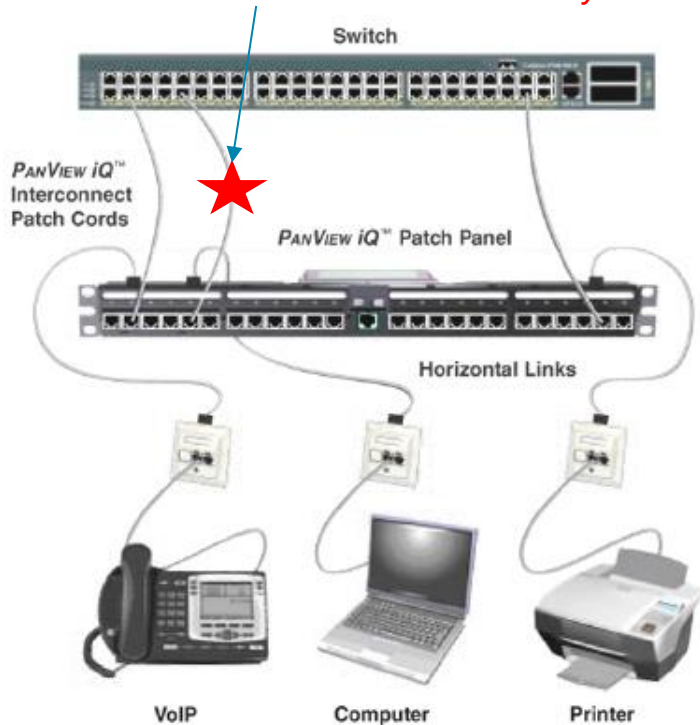
- Edge and Colo-Tenant sites remote and isolated
- No visibility into a potential security vulnerability
- No visibility into dense physical layer connectivity
- Physical infrastructure is largely overlooked
- No real-time monitoring and alerting
- Loss of business and data breach



smartzone™ *Connectivity* PViQ Standalone Solution

Set Port Security Policy for Interconnect and Cross-Connect

Cord Disconnect or Connect Security Alert:



- Local visual alert
- Recovery instructions
- Audit trail completed
- Event alert sent



Real-Time Traps & Email (Disconnect, Connect, etc.)

WebGUI for remote access, configuration and upgrade

Dashboards

Alarms

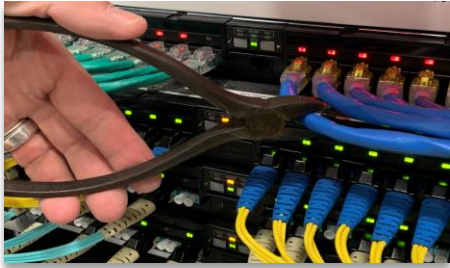
History

BYOD & Browser

Solution Use Cases – Security Violations

EdgeDC and ColoDC-Tenant Sites w/ Remote Isolated Equipment

Malicious Disconnect



Line Tapping



Port Tapping



Accidental Disconnect



Consolidated Alarm Server

SmartZone DCIM CONNECT

Alarm Trap

Alarm Email

Alarm Email



Value Proposition

- Per port security policy setting, monitoring and alerting
- Real-time information on network connectivity status
- Monitor and alert of any patch field changes
- Monitor connectivity-based security risks
- Harden security w/ advanced encryption
- WebGUI-based management system
- Interconnect & Cross-connect connections
- Cable presence detection assurance
- Cable mapping and visual tracing
- Copper and Fiber options
- Field upgradable panel

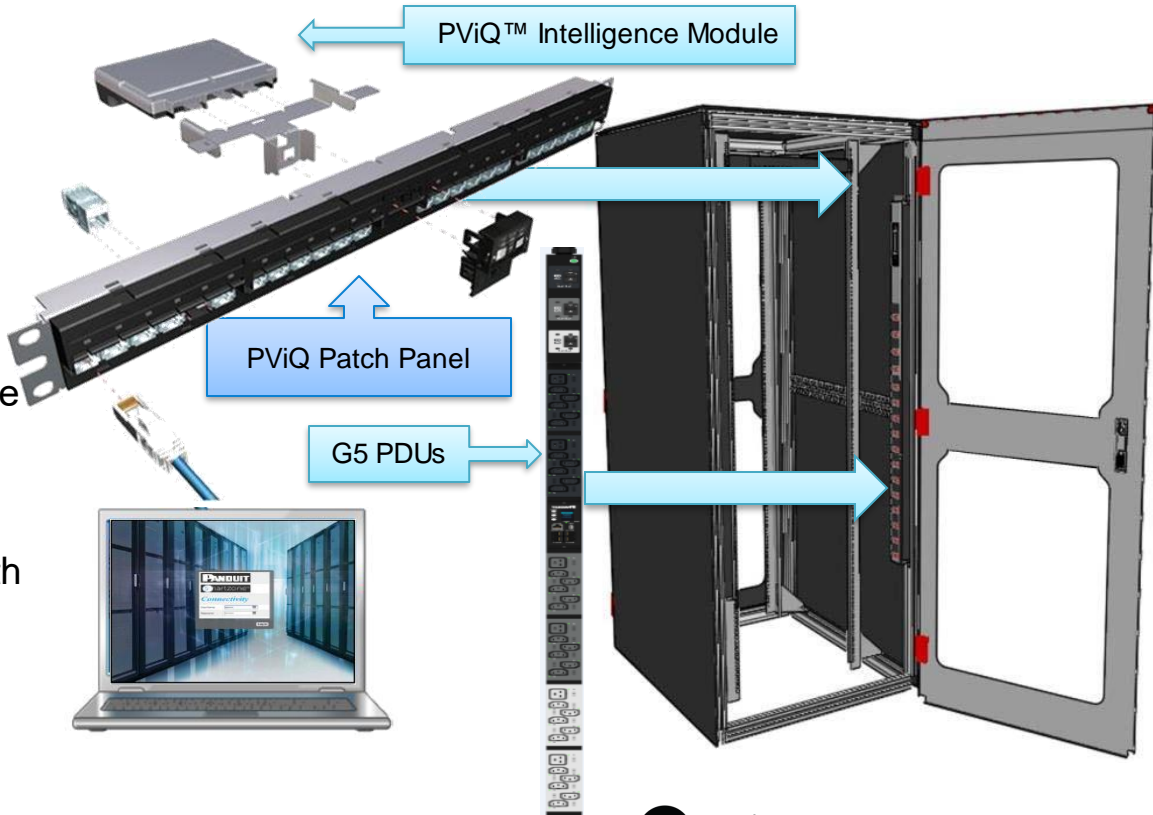


smartzone™ *Connectivity*



The **SZ *Connectivity*** firmware and a supporting set of PViQ™ intelligent hardware appliances provide active and passive connectivity management.

Together, they reduce deployment errors with controlled and guided violation corrections, and network resource information to aid the capacity planning process.



Hardware

PViQ™ Patch Panels

- **Industry-First Innovation**
- Interfaces seamlessly with WebGUI or DCIM to:
 - Provide intelligent, real-time monitoring of patch field connectivity
 - Modular approach provides installation options; Fully Managed or Managed Ready
 - Does not impact data traffic



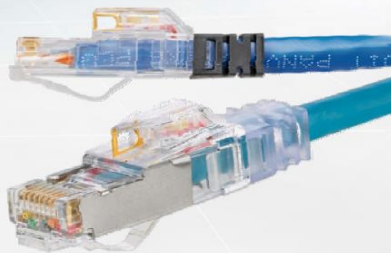
PViQ Fiber Tray

- Provides Fiber Channel support by utilizing Mini-Com LC Fiber Optic Adapters
 - Multimode and single mode connections supported
- Internal Fiber Management protects splices and pigtails from damage while maintaining bend radius control
- Rack or Cabinet Mounted Mounts to either a rack or cabinet for flexible installations



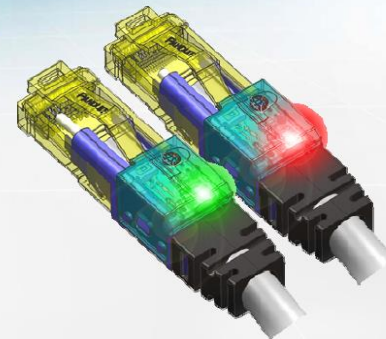
PViQ Intelligent Patch Cords

- Shielded and Unshielded Patch Cords
- Different options available to accommodate several preferred installation options such as cross-connect or interconnect
- Performance Tested Assures reliability of performance for maximum uptime
- 9th Wire technology provides accurate connectivity monitoring & tracing without affecting network traffic



PViQ Intelligent Patch Cords

- Enhanced Interconnect Patch Cords incorporate Integrated LEDs
- Guided Switch Port Disconnects
 - Reduce risk and enable secure disconnects
- Visual Traceability Enables port tracing between PViQ Panels and network switches connections



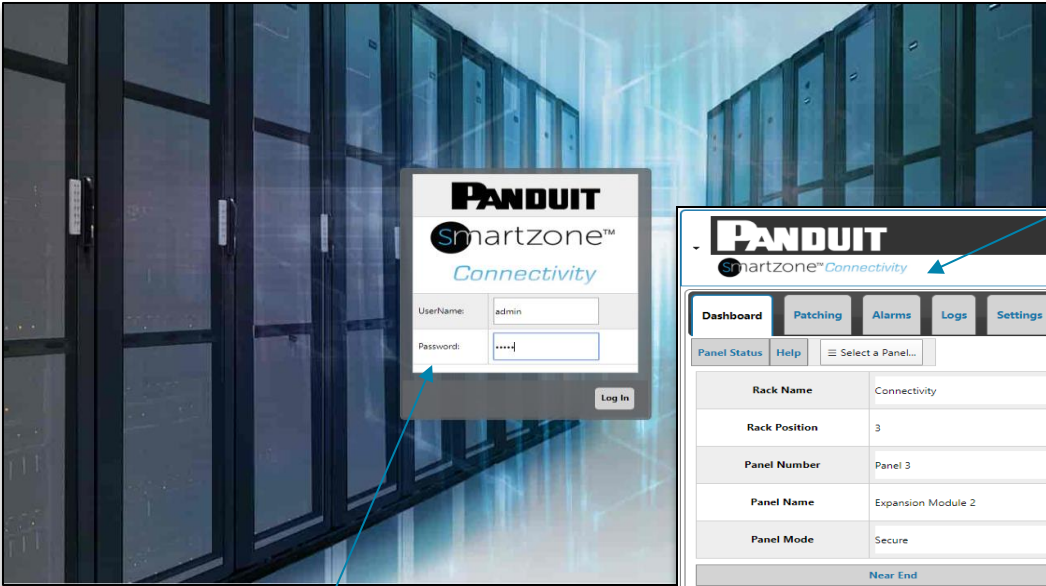
Panel LED Status & Alerts

IU Display	MODE	Meaning	IU Display	MODE	Meaning
	SECURE	Normal operating state		MAC	Notifies users when change orders are pending
	LEARN	Commit the current patch field to the database (9-wire cross connect)		MAC	MAC in progress – single sided connection
	TRACE	Directs users to the near and far end of patch field for end-to-end connectivity		Firmware Update	A firmware update of the PM is in progress

MODE	Meaning	Full Panel Display
MAINTENANCE	Perform system resets	
LOCATION	Identify where a specific panel resides	
FIRMWARE UPDATE	An update of the panel firmware is in progress	

Multi-Device & User-Friendly WebGUI

One-Click Navigation



PANDUIT
Smartzone™
Connectivity

User Name:

Password:

[Log In](#)

Graphical
Secure
Web Login

Smartzone™ Connectivity

Log Out

Dashboard
Patching
Alarms
Logs
Settings

Panel Status Help ☰ Select a Panel...

Rack Name	Connectivity		
Rack Position	3		
Panel Number	Panel 3		
Panel Name	Expansion Module 2		
Panel Mode	Secure		

Near End	Panel Port	Security Policy
3:1	Port 1 Cross-Connect Security Policy Violation! Connected - Both Ends	<No Cable Connected>
3:2	Port 2 Cross-Connect Security Policy Violation! Connected - Both Ends	<No Cable Connected>
3:3	Port 3 Cross-Connect Security Policy Violation! Connected - Both Ends	<No Cable Connected>
3:4	Port 4 Cross-Connect Security Policy Violation! Connected - Both Ends	<No Cable Connected>
3:5	Port 5 Cross-Connect Security Policy Violation! Connected - Both Ends	<No Cable Connected>
3:6	Port 6 Cross-Connect Security Policy Violation! Connected - Both Ends	<No Cable Connected>
3:7	Port 7 Disconnected Secure_Disconnected	<No Cable Connected>

Alarm Viewing

Multi-Device & User-Friendly WebGUI

PANDUIT
Smartzone™ Connectivity

Dashboard Patching Alarms Logs Settings

Panel Port Configuration Help Select a Panel...

Near End...the patch cord plugs into this Panel Port

NE Horizontal (Back) 3:1

Save Cancel

Panel Name Expansion Module 2

Select a Port... 1

Panel Mode Secure

Set Panel to Secure Mode

Set Panel to Trace Mode

Alarm Status Secure

Port Status Connected - Both Ends

Patch Cord Type Cross-Connect

Far End Status...the other end of the patch cord

Far End Panel Expansion Module 2 MAC: 00:0F:9C:05

Far End Port 13

Port Status Both Connected

FE Horizontal Name 3:13

Clear Security Policy

Context Help

Provision the panel ports. Configure what each port should expect. When the port security authorization has been violated, the system will generate an...

Patching/Connectivity Details

Security Violation Location Alarm

Unauthorized Cable Connection Alarm

PANDUIT
Smartzone™ Connectivity

Dashboard Patching Alarms Logs Settings

Patch Cable Alarms Help

Alarms

Panel 1: Panel Manager

Port	Alarm Description
*	This panel has 10 unauthorized connections (security policy violations)!
1	Panel 1: Panel Manager, Port 1: 1:1, MAC:00:0F:9C: detected an unauthorized cable was connected! To repair, disconnect the cable from the panel, or configure a Security Policy. Rack: Connectivity-1
3	Panel 1: Panel Manager, Port 3: 1:3, MAC:00:0F:9C: detected an unauthorized cable was connected! To repair, disconnect the cable from the panel, or configure a Security Policy. Rack: Connectivity-1
9	Panel 1: Panel Manager, Port 9: 1:9, MAC:00:0F:9C: detected an unauthorized cable was connected! To repair, disconnect the cable from the panel, or configure a Security Policy. Rack: Connectivity-1
10	Panel 1: Panel Manager, Port 10: 1:10, MAC:00:0F:9C: detected an unauthorized cable was connected! To repair, disconnect the cable from the panel, or configure a Security Policy. Rack: Connectivity-1
11	Panel 1: Panel Manager, Port 11: 1:11, MAC:00:0F:9C: detected an unauthorized cable was connected! To repair, disconnect the cable from the panel, or configure a Security Policy. Rack: Connectivity-1
12	Panel 1: Panel Manager, Port 12: 1:12, MAC:00:0F:9C: detected an unauthorized cable was connected! To repair, disconnect the cable from the panel, or configure a Security Policy. Rack: Connectivity-1
17	Panel 1: Panel Manager, Port 17: 1:17, MAC:00:0F:9C: detected an unauthorized cable was connected! To repair, disconnect the cable from the panel, or configure a Security Policy. Rack: Connectivity-1
18	Panel 1: Panel Manager, Port 18: 1:18, MAC:00:0F:9C: detected an unauthorized cable was connected! To repair, disconnect the cable from the panel, or configure a Security Policy. Rack: Connectivity-1
19	Panel 1: Panel Manager, Port 19: 1:19, MAC:00:0F:9C: detected an unauthorized cable was connected! To repair, disconnect the cable from the panel, or configure a Security Policy. Rack: Connectivity-1
20	Panel 1: Panel Manager, Port 20: 1:20, MAC:00:0F:9C: detected an unauthorized cable was connected! To repair, disconnect the cable from the panel, or configure a Security Policy. Rack: Connectivity-1

Panel 2: Expansion Module 1

Multi-Device & User-Friendly WebGUI

PANDUIT
Smartzone™ Connectivity

Log Out

Dashboard Patching Alarms **Logs** Settings

Alarm Log

Alarm Log Help

Log Data

```
[Timestamp: "2036/02/07 00:41:11"
AlarmDescription: "Unauthorized patch cord connect."
AlarmType: "100 unauthorized_patch_cord_connect"
Cord Type: "3" (Connected)
Port Number: "3"
Panel Number: "Panel 1"
Near End Rack Position: "1"
Near End Rack Name: "Connectivity"
Request ID: "3" (Local ad-hoc.)
Near End Panel Name: "Panel Manager"
]

[Timestamp: "2036/02/07 00:41:10"
AlarmDescription: "Unauthorized Double-Ended patch cord connect."
AlarmType: "145 unauthorized_double_ended_patch_cord_connect"
Cord Type: "3" (Connected)
Port Number: "3"
Panel Number: "Panel 1"
Far End IP: "10."
Far End Panel Number: "1"
Far End Port: "3"
Near End Rack Position: "1"
Near End Rack Name: "Connectivity"
Request ID: "3" (Local ad-hoc.)
Near End Panel Name: "Panel Manager"
]
```

Refresh Print

Context Help
The Alarm Log is a Key-Value (grouped) list of every Alarm/Trap that was generated.

Alarm History

Network Settings

PANDUIT
Smartzone™ Connectivity

Log Out

Dashboard Patching Alarms Logs **Settings**

General Email SNMP Users

Settings Help Select a Panel...

System Information	
FW Version	02.01.00 ()
System Name	Panel Manager
Contact	undefined

Network Settings	
MAC	00:0F:9C:
IPv4 Configuration	
Boot Mode	DHCP
IP Address	10.
Network Mask	255.255.252.0
Default Gateway	10.

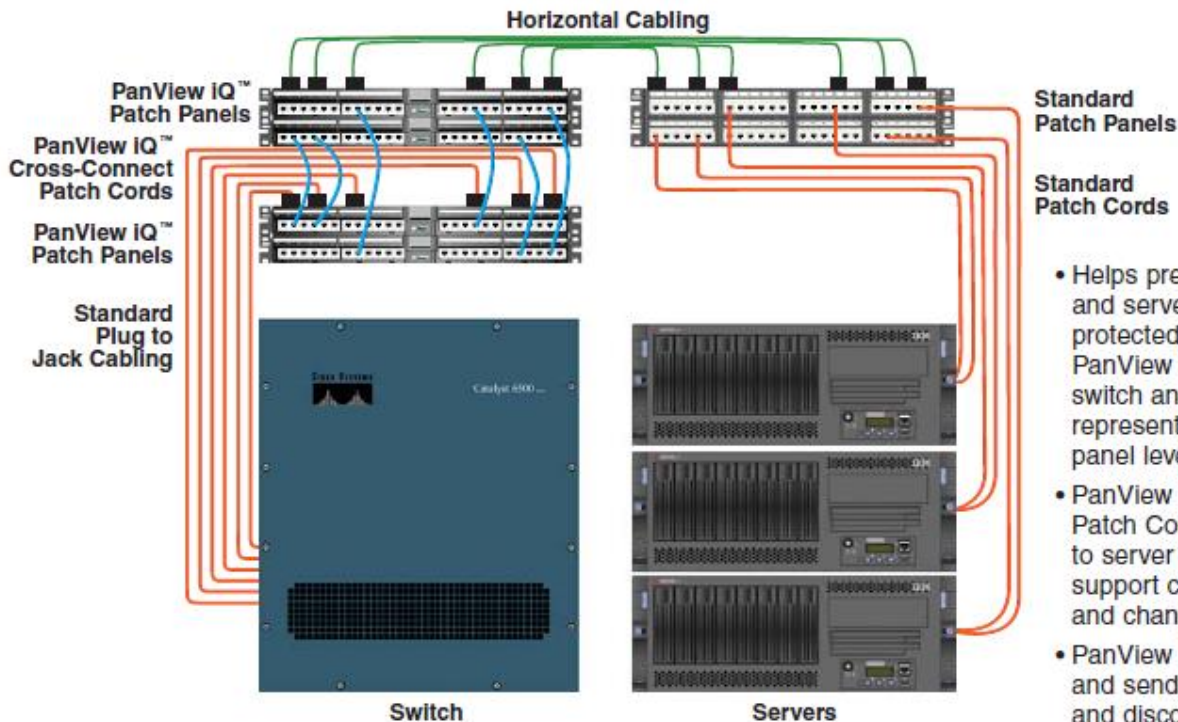
Network Time Protocol (NTP)	
Enable	<input checked="" type="checkbox"/>
Primary IP	
Secondary IP	
Tertiary IP	
Refresh Rate	720
Time Zone	-06:00

Date/Time	
Date	2036/02/07
Time	00:42:53

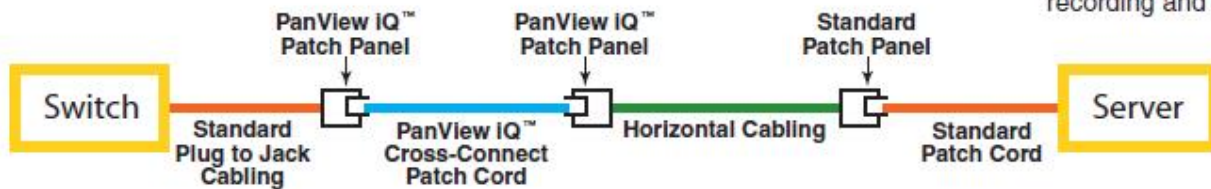
Panel Settings	
Rack Name	Connectivity
Rack Position	3
Panel Name	Expansion Module 2
Panel Mode	Secure
Configured Mode	Secure
Application	copper
Shape	flat
Shield	exposed

Web Settings	
TLS Certificate & Key PEM file	Choose File No file chosen

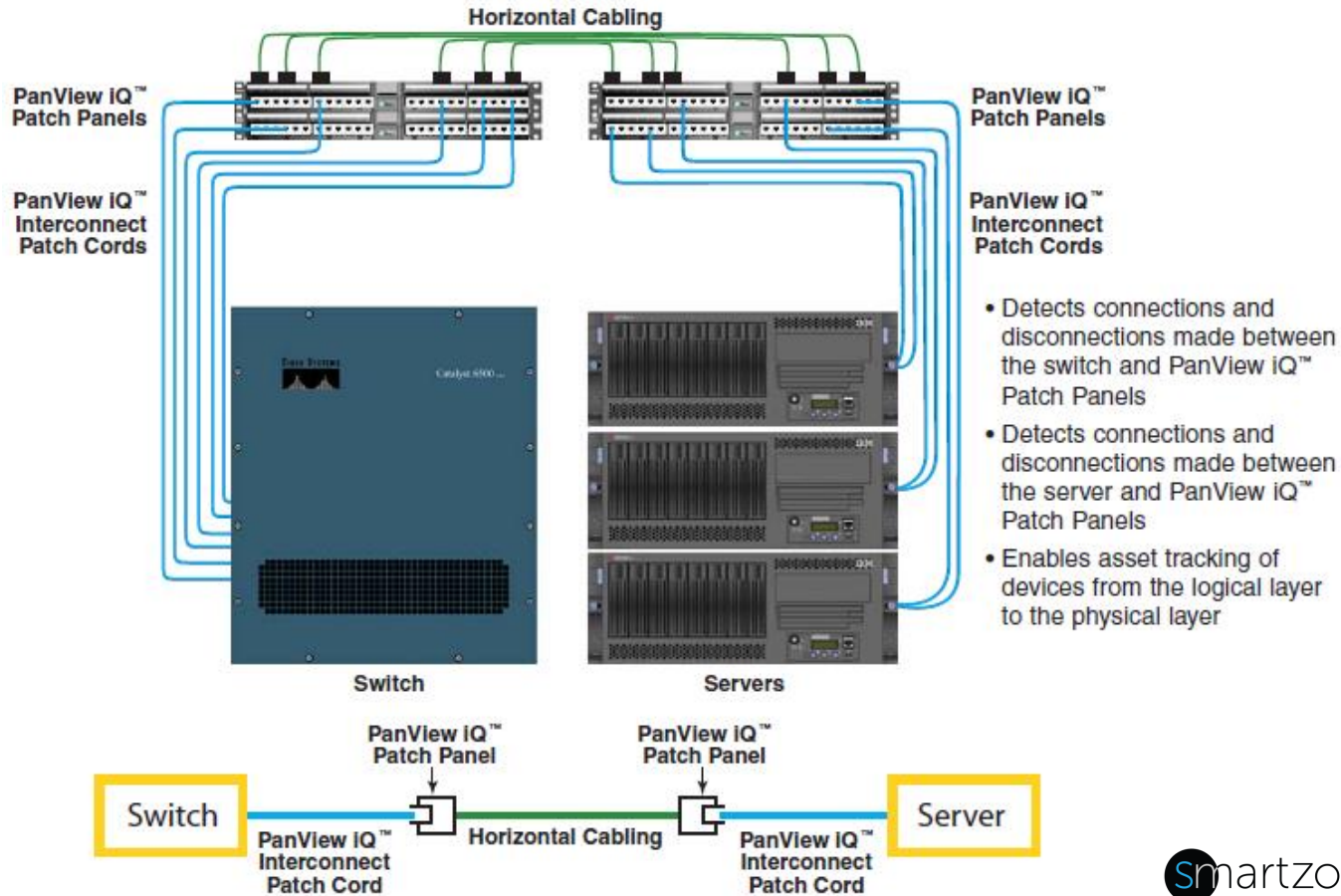
Connection Traceability - Cross-Connect



- Helps prevent damage to switch and server ports by creating protected patch field between PanView IQ™ Patch Panels. Each switch and server port is represented at the patch panel level
- PanView IQ™ Cross-Connect Patch Cords guarantee switch to server traceability to support critical moves, adds, and changes
- PanView IQ™ Patch Panels detect and send notifications of connect and disconnect status for event recording and security purposes



Connection Traceability - Interconnect



SmartZone DCIM Connectivity Software Solution (Optional)

Key Features:

- Management of End-to-End Network Connectivity
- Cabling Capacity
- Auto-Notification of Link Status
- Auto-Reconcile Devices



Value:

- Shortens connectivity troubleshooting time
- Provides cabling capacity for faster asset deployment
- On/Off-Line Device Notifications
- Notification of Devices that need to be Reconciled



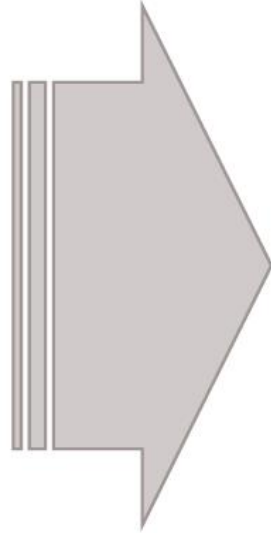
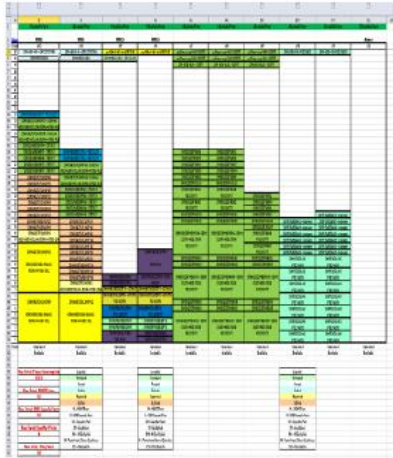
The screenshot displays the SmartZone network management interface. At the top, the navigation bar includes 'Infrastructure', 'Events', 'Tasks', 'Reports', and 'Admin'. A search bar is located at the top right. On the left, there is a 'Location Tree' and a 'Crating' section. The main area displays a grid of network devices (routers, switches, and servers) connected by various cables (e.g., 3-Wire, Patch Cord, Multiside Fiber). A search bar on the left side of the grid is active with the text 'Device Name Goes Here'. At the bottom, there is a 'Quick Links' bar with various application icons.

Asset Tracking

Create Virtual Data Center Map

Old Way

Excel



New Way



Rack View



Floor Plan View



This screenshot provides a detailed view of a server rack in the PIM Infrastructure. The interface is split into three main areas: a left-hand navigation pane, a central rack view, and a right-hand details pane.

- Navigation Pane:** Lists various racks and their status, including A895 (24), A897 (24), A898 (23), A899 (21), A810 (8), A811 (24), A812 (24), A794 (3), A795 (23), A796 (23), A797 (23), A798 (23), and A799 (23).
- Rack View:** Shows the front and back views of a server rack. The front view displays two devices that are not shown, and the back view also displays two devices that are not shown.
- Details Pane:** Provides comprehensive information about the selected device:
 - General:** Name: A795, Type: K5U Q15 - Intel® Catalyst™ VPRO Series and Data Parallel, 12 B, 12x1000 SFP.
 - Back Overview:** 100 to 10000, Number of Devices: 22, Vendor Name: Panduit Corp.
 - Location:** Company/Location: Worldwide Resources/A - Prime Data Center, Blower: OFF.
 - Rack Util:** Rack Units Available: 23, Rack Units in Process: 0, Rack Units Committed: 22, Rack Units Total: 45, Rack Configuration System: 23.
 - Switch Ports:** Switch Ports Available: 46, Switch Ports Total: 46.
 - PHY Ports:** PHY Ports Available: 24, PHY Ports in Process: 0, PHY Ports Committed: 0, PHY Ports Total: 24.
 - Powered Ports:** Powered Ports Available: 46.

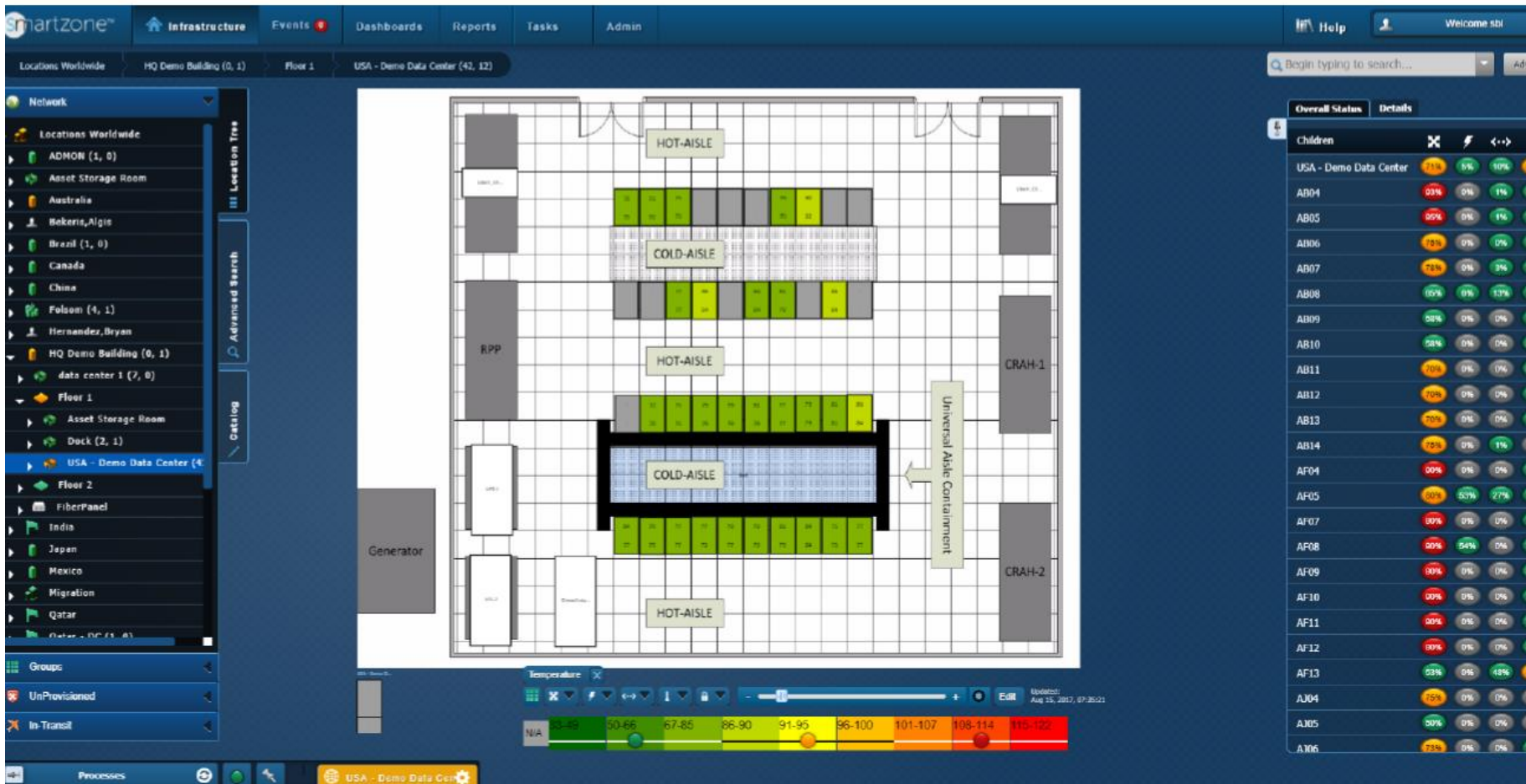


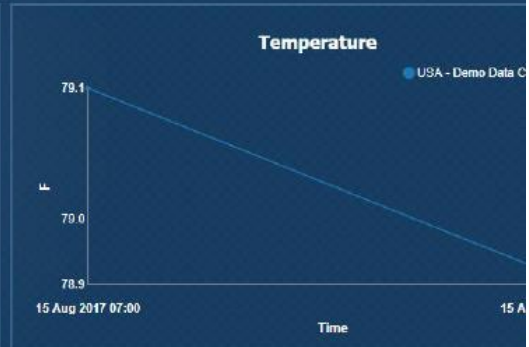
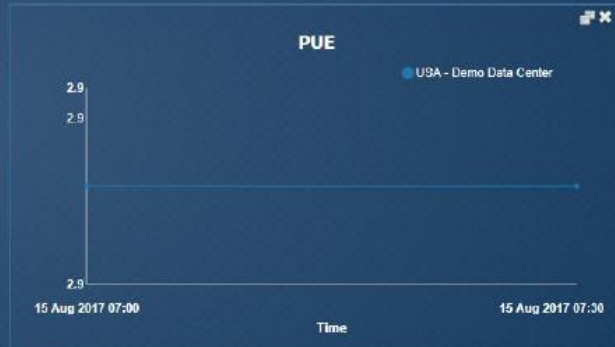
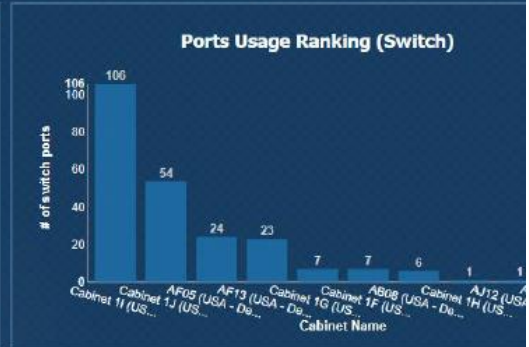
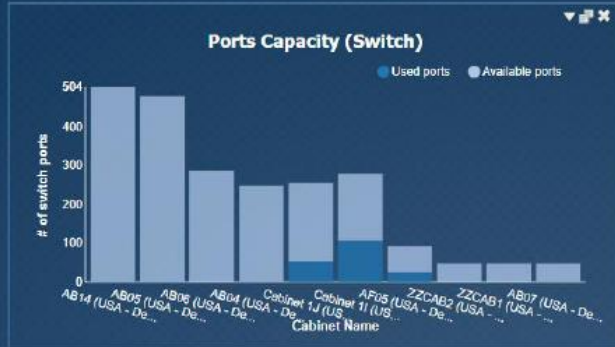
Visualization of rack front and back views

Rack units and physical connectivity details

Rack power details, including redundant feeds, phases, 90-day maximums, and both nameplate and de-rated nameplate

Rack environmental details





Hardware Smart Zone

Intelligent Power Distribution Unit



Sensors for iPDU

Temperature



Door

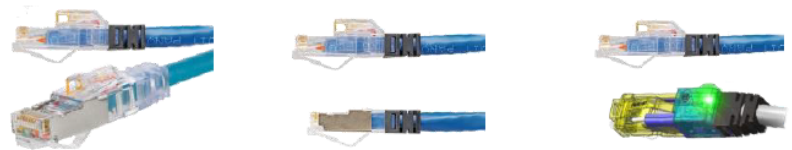
Water



Intelligent Patch Panel



Intelligent Patch Cords



MP100 and MP300 Mobile Printers



PANDUIT[®]

Mobile Printer Offering

MP100

- 180 dpi print resolution
- Automatic Cutter
- Up to 1.0" inch wide label media
- Prints continuous labels
- USB and Bluetooth connectivity
- Printing from Easy-Mark Plus
- Printing from smart phone apps
- Integration with Fluke LinkWare™ Live
- Compact Size



\$169 Target Resale

MP300

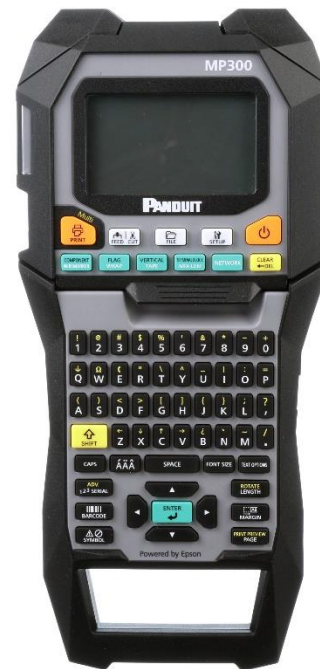
- 360 dpi print resolution
- Automatic cutter with full or half cut
- 1.4"/sec print speed
- Up to 1.5" wide label media
- Prints die-cut and continuous labels
- USB connectivity
- Printing from Easy-Mark Plus
- Magnetic attachment accessory
- Improved firmware more languages, more symbols, QR code
- Rechargeable battery pack



\$379 Target Resale

MP300 Value Proposition

- Variety of die-cut and continuous label materials including Turn-Tell labels, self laminating labels, magnetic tape, and vinyl tape
- Fast print speed at 1.4 inches per second
- Use with rechargeable Li-ion battery pack or AA batteries
- Automatic cutter offers full or half cutting



MP Cassettes

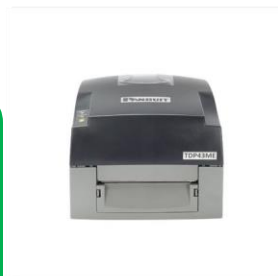
- Same type of cassettes used in MP100 & MP300
- Type and size automatically recognized
- Will only work with Panduit printers (will not work in Epson printers)
- 34 additional cassettes coming March 2020 (marker plates, network & electrical component labels, flag labels, additional colors and sizes of continuous tape)
- 12 heat shrink cassettes coming May 2020



4 Turn-Tell™ label cassettes
9 Self-Laminating label cassettes
19 Continuous tape cassettes

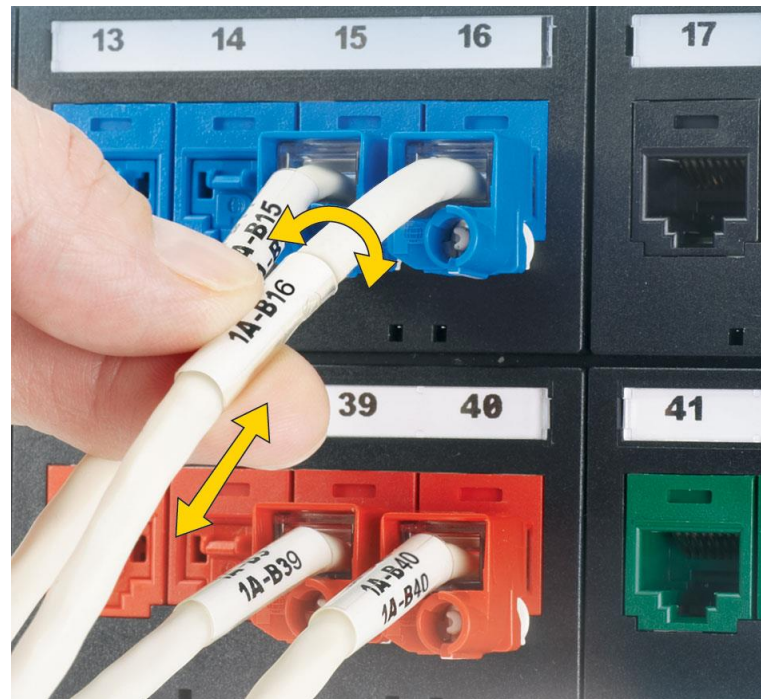
Compliments Existing Printer Offering

- Handheld Printers
- Desktop Printers
- Metal embossing system



Turn-Tell Labels

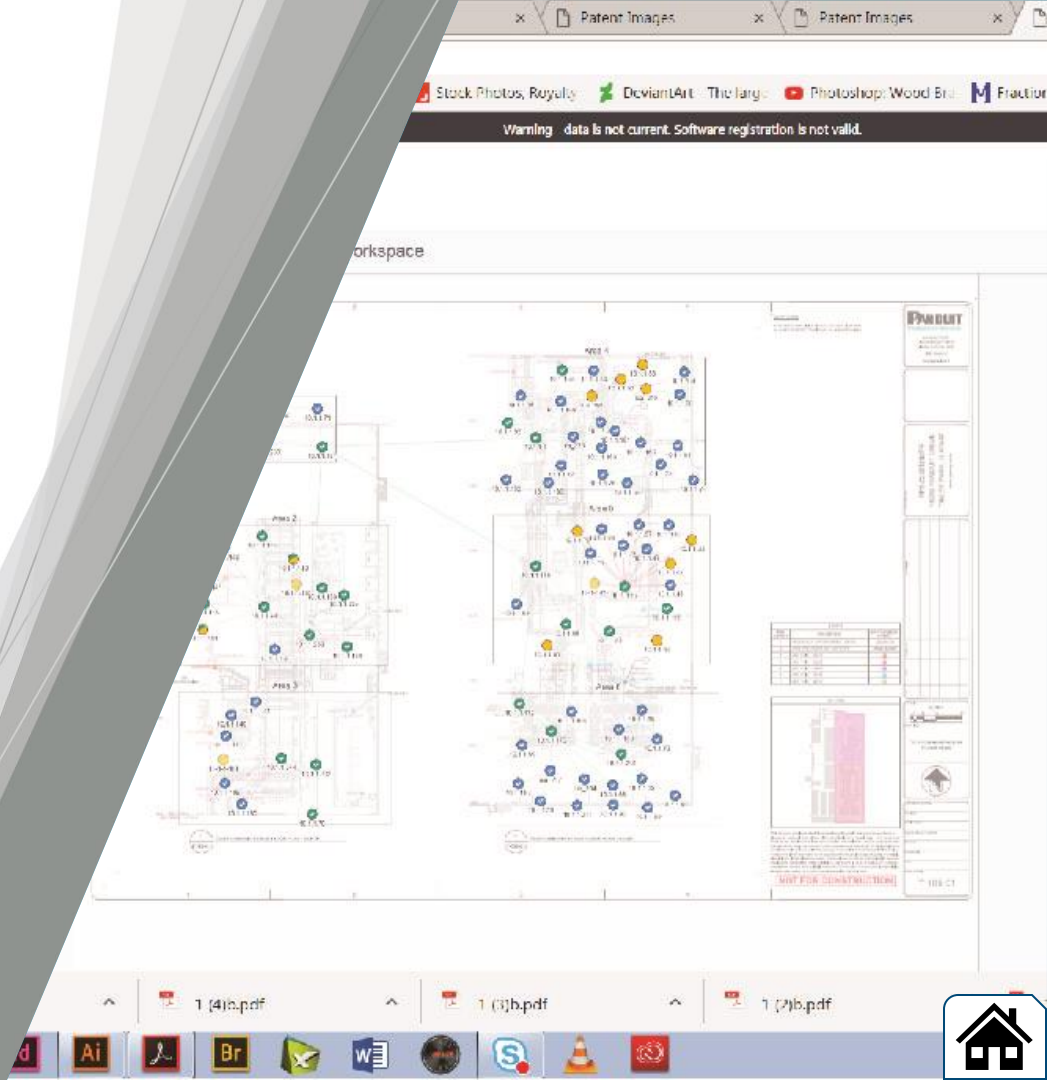
- Label can be moved after installation:
 - Allows labels to rotate for visibility from any angle and for repositioning on the wire/cable, to align legends and improve aesthetics
 - Labels can be easily repositioned once installed on the wire/cable to save time and cost associated with relabeling



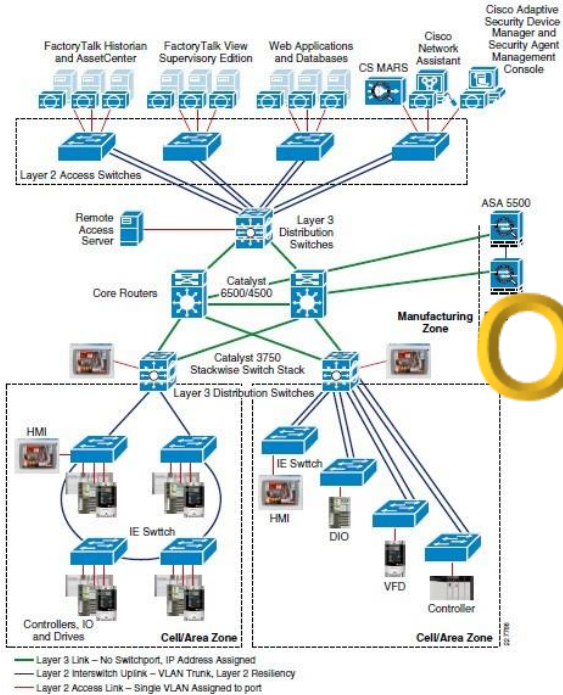
IntraVUE™

For a Reliable Plant Infrastructure

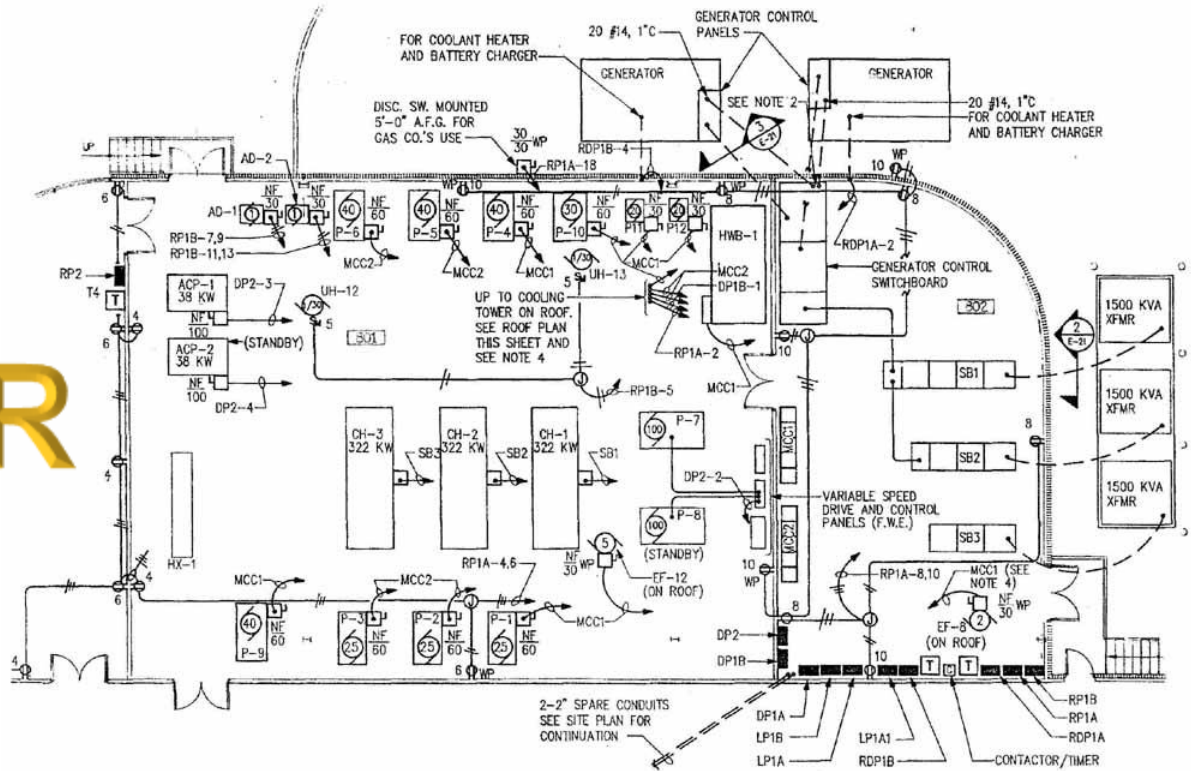
PANDUIT®



Do plants need better documentation?



OR



Documentation Capabilities

localhost:8765/v3/#/network/topology/topology-graph

IntraVUE Configure View Analyze Help

7/1 English Login

Topology Plant Layout **BETA** Device List Filters Event Log Diagnostics

Search: [Type to filter data...]

IP Address	MAC Address	Network Name	Device Name	Model	Revision	SNMP Status	Critical Status
10.132.57.102	f4:54:33:9d:83:69	SSRGS7	no name				
10.132.57.103	f4:54:33:9b:b7:37	SSRGS7	no name				
10.132.57.104	f4:54:33:9b:60:46	SSRGS7	no name				
10.132.57.105	f4:54:33:51:e9:a1	SSRGS7	PLN-IOT-PVP7-				
10.132.57.13	f4:54:33:3f:9e:41	SSRGS7	pin-iot-5700-1.				
10.132.58.153	f4:54:33:3f:96:c1	SSRGS8	PLN-SSRG-Swit				
10.132.37.163	f4:54:33:3b:65:41	IALab37	PLN-IA-5700-1'				
10.132.57.14	f4:54:33:0d:73:41	SSRGS7	pin-iot-5700-2.				
10.132.58.155	f4:54:33:07:31:c1	SSRGS8	PLN-SSRG-Swit				
192.168.1.185	f0:ad:4e:02:d5:16	SSRG192	no name				
10.132.58.186	f0:ad:4e:02:d5:15	SSRG58	no name				

Number of Records: 133

IntraVUE Configure View Analyze Help

7/1 English Login

Topology Plant Layout **BETA** Device List Filters Event Log Diagnostics

Add Container
 Edit Container
 Delete Container
 Move Descendants
 Hide Connection lines

Shipping: ENG 1008 ServSwitch II Managed Switch, Unmanaged Switch, Lareons EPS Print Server, Document Server, Dell Wireless Router, Ethernet Direct Managed Switch, Pro Controller 2A, LNS/ACS/XP/1104, Cisco Managed Switch, REC-Ce Scanner 26, Cisco Managed Switch, OP-IRAP/AGV, FL Hub Agent, BILL-MAN-MIC-M4600, JESSE-LAP/M4600, Scanner 25, eYAC-XP/1104 Managed Switch-QBF05

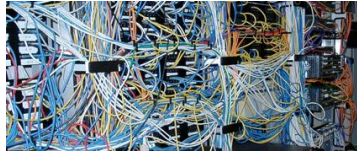
Packaging: Control Room Unmanaged Switch, DBIT-02, Packaging Machine 45, Palletizer 2, Palletiser 1, N-TRON Managed Switch NV-1000-CAST-1501, PRE-SGM, PLC 1 Managed 110.1.1.79, 1.1.1.1, SUZAN/cisco Managed Switch, PLC 21 HG Rack 2, PLC 21 HG Rack 3

Filling: BILL-SPRO, AS-NS-CHIP, LIB10/MAIP1, Lib10/MAIP, LIB10/MAIP2, Unmanaged Switch, RTU 234, RTU 212/10 211, OP-Data 20 Controller 21, ARMOR-LOCK 1500C, Tinter Control 1, Unmanaged Switch, Boiler Control 2, Op Station 54, CLAIR-DESKTOP, CD-FILE-HP

Other: QUICKBOOKS-XP, VMS-XP/PRO, Data Collector, LIB600-LAM, LIB600-LAM2, OP-FAVES, N-TRON Managed Switch NV-1000-CAST-1501, PL 1, PL 2, PL 3, PL 4, PL 5, PL 6, PL 7, PL 8, PL 9, PL 10, PL 11, PL 12, PL 13, PL 14, PL 15, PL 16, PL 17, PL 18, PL 19, PL 20, PL 21, PL 22, PL 23, PL 24, PL 25, PL 26, PL 27, PL 28, PL 29, PL 30, PL 31, PL 32, PL 33, PL 34, PL 35, PL 36, PL 37, PL 38, PL 39, PL 40, PL 41, PL 42, PL 43, PL 44, PL 45, PL 46, PL 47, PL 48, PL 49, PL 50, PL 51, PL 52, PL 53, PL 54, PL 55, PL 56, PL 57, PL 58, PL 59, PL 60, PL 61, PL 62, PL 63, PL 64, PL 65, PL 66, PL 67, PL 68, PL 69, PL 70, PL 71, PL 72, PL 73, PL 74, PL 75, PL 76, PL 77, PL 78, PL 79, PL 80, PL 81, PL 82, PL 83, PL 84, PL 85, PL 86, PL 87, PL 88, PL 89, PL 90, PL 91, PL 92, PL 93, PL 94, PL 95, PL 96, PL 97, PL 98, PL 99, PL 100

Powerful Vendor-Neutral Diagnostics

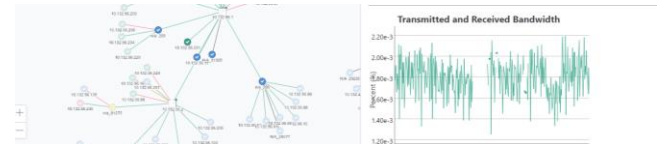
Damaged Connections



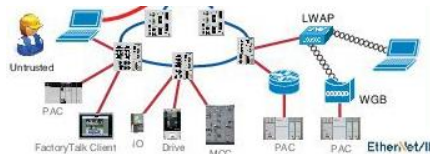
Failed Devices



Application Problems



Architecture Problems



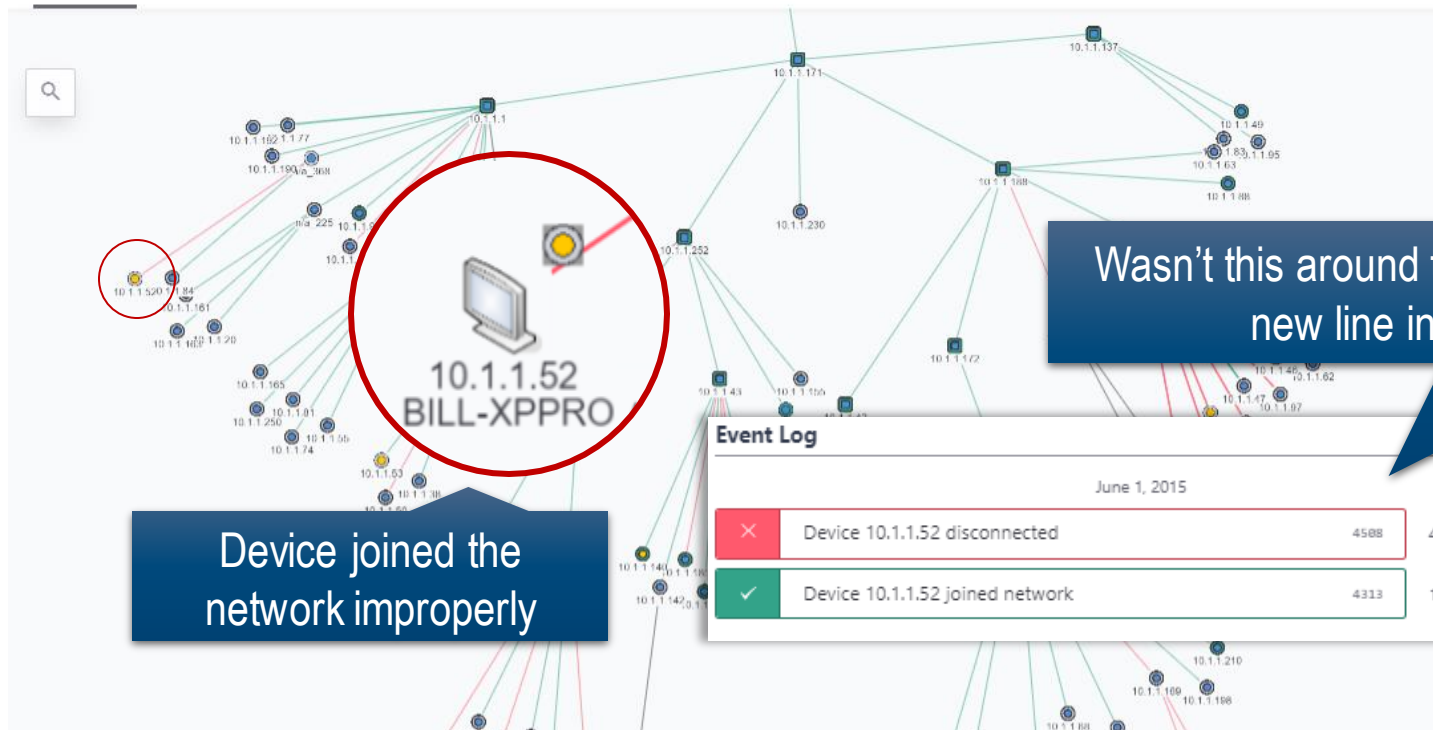
Events Log

✓	SNMP returned on 10.1.1.1	4556	4:12 pm
✓	Ping Response Threshold Cleared	4555	4:12 pm
!	Ping Response Threshold Exceeded	4548	4:11 pm
✗	SNMP lost on 10.1.1.1	4534	4:10 pm

Real-time Detection of New Devices

IntraVUE [Configure](#) [View](#) [Analyze](#) [Help](#) [About](#) Warning - data is not current. Scanner is in OFFLINE mode.

[Topology](#) [Plant Layout](#) [Network List](#) [Event Log](#)



Wasn't this around the time of the new line install?

Device joined the network improperly

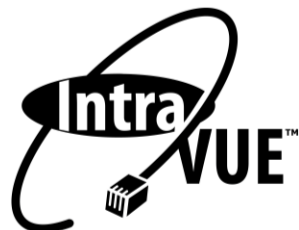
Event Log		
June 1, 2015		
✘	Device 10.1.1.52 disconnected	4588 4:08:18 PM
✔	Device 10.1.1.52 joined network	4313 1:28:58 PM

IntraVUE™ Documentation Assessment

What is Delivered

- Documentation of devices within the network
- Input to device connection risks
- Continuing operational 30-day IntraVUE® license on Windows OS to pick up additional changes on the network post-assessment

**Base service excludes offline devices and isolated networks*



	IP Address	MAC Address	Vendor
↔	192.168.57.249	14:b3:1f:28:25:e4	Dell Inc.
	192.168.57.10	e4:90:69:66:29:c1	Rockwell/Allen-Bradley
	192.168.57.11	50:67:ae:73:9e:c1	Cisco Systems, Inc
	192.168.57.12	00:00:bc:fe:db:c1	Rockwell/Allen-Bradley
	192.168.57.13	f4:54:33:3f:9e:41	Rockwell/Allen-Bradley
↔	192.168.57.122	00:30:18:02:94:89	Jetway Information Co., Ltd.
	192.168.57.14	f4:54:33:0d:73:41	Rockwell/Allen-Bradley
⚠	192.168.57.16	ec:e5:55:5b:0a:ae	Hirschmann Automation
	192.168.57.17	ec:e5:55:98:9c:e7	Hirschmann, a Belden brand
⚠	192.168.57.15	ec:e5:55:5b:03:74	Hirschmann, a Belden brand
	192.168.57.120	00:33:6c:12:02:ef	Panduit Corporation

IntraVUE™ Edge

- Perpetual use, no contracts
- Device Discovery
- Connection Map and Plant Layout
- Remote Access
- Monitoring and Alerts

Part Number: PNPIV



Preguntas y Respuestas



Próximo webinar – **Viernes 29 de mayo a las 10hrs (GMT-5)**

PANDUIT

Sesión 11:
Edge Computing -
La Nueva Era de
los Centros de
Datos

Viernes 29 de mayo

MX - COL - ECU - PER - 10 hrs.

CL - BOL - 11 hrs.

ARG - BR - URY - 12 hrs.

Conectando Empresas a un Mundo de Posibilidades

**GET TO
KNOW
PANDUIT**

**GET TO
KNOW
PANDUIT**

CONTACTO



latam-info@panduit.com



PANDUIT™



Erick Carmona

Technical Systems Engineer – México

erick.carmona@panduit.com

Gracias!

The background features a gradient from dark blue at the top to bright white in the center, with numerous horizontal light streaks. The bottom portion is dark blue and contains a network of glowing blue nodes connected by thin lines, resembling a digital or data network.